

# CREATING A PROSHOW SLIDESHOW



Workshop presentation by Robin Pitcher – basic workflow and a few tips

# CREATING A PROSHOW SLIDESHOW

1. When you first use **ProShow**, set up **Preferences**.
  - \* Set up the ' **Maximum Internal Rendering Resolution**' to match your computer.
  - \* Set up defaults for slide settings, external editors etc.
2. **Prepare your** photos and save as **jpeg**s in a separate **folder**. If you know what music you want to use, save it into this folder as well.

# CREATING A PROSHOW SLIDESHOW

3. Select **New Show** and set up **title, screen aspect and 'random transition effects'**.

4. Add photos to show either:

- **Add all files to show** or
- **Drag and drop photos** in the order you wish

# CREATING A PROSHOW SLIDESHOW

5. Add Audio
  - \* Sync slides to audio or
  - \* Adjust start and/or end of music to match the length of the show
6. Now go to > slide>effects> motion effects and adjust zoom by adjusting 'starting' and 'ending' position, N.B. 'Ken Burns' effect.

# CREATING A PROSHOW SLIDESHOW

7. Adjust **slide** and **transition** time as appropriate
8. Preview show and make any adjustments.
9. Select **output** for show e.g.: **DVD, PC exe file** etc
10. Create **Menu** for show or shows

# CREATING A PROSHOW SLIDESHOW

11. Under 'Options':

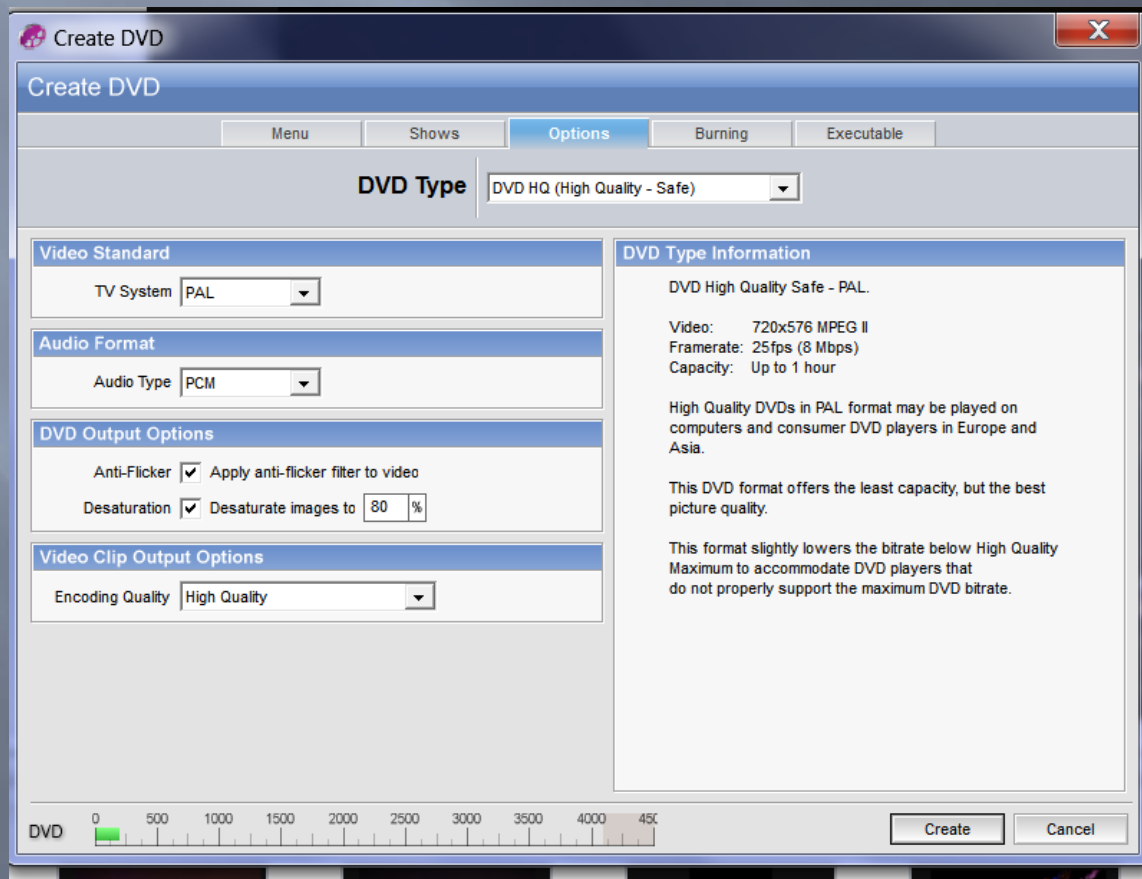
- Select **PAL**
- For Audio select **PCM**
- Tick **Anti-Flicker** and **Desaturation – 80%**
- Encoding Quality - High

12. For **exe file** or **PC autorun**:

- **Window size**: the same as your computers screen resolution, as set in Preferences.

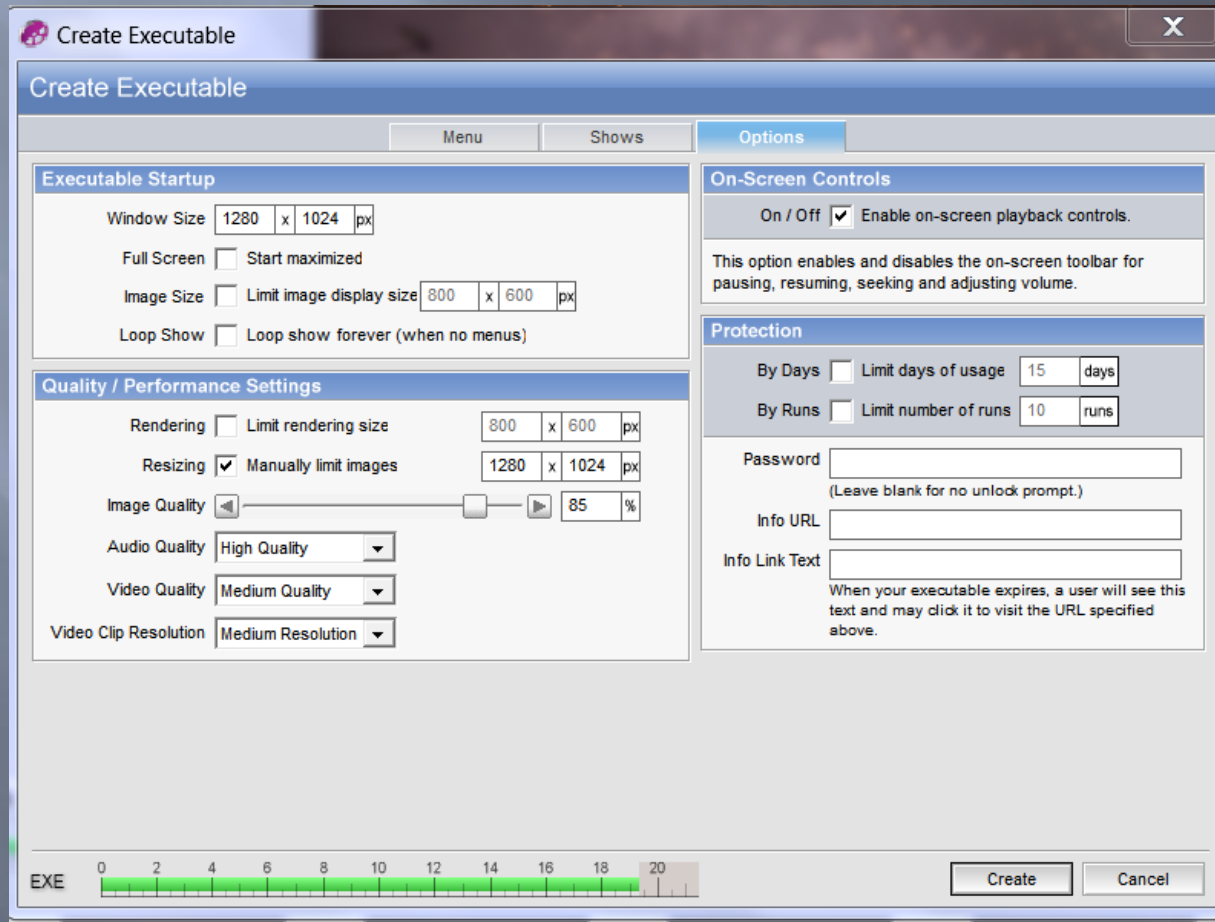
# CREATING A PROSHOW SLIDESHOW

## 13. Suggested settings for DVD burning:



# CREATING A PROSHOW SLIDESHOW

## 13. Suggested settings for PC exe file:



# CREATING A PROSHOW SLIDESHOW

14. There are many other options to use in ProShow:

- Add blank slides with text
- Add text to any slide
- Use **slide styles**
- Specify the **slide timing** of any slide and lock it in.
- Use different **backgrounds**, either an image or different colours. There is also an built in **Background** file to select from.
- You can add layers to a slide with different motion effects

# CREATING A PROSHOW SLIDESHOW

This software slideshow program can only be purchased online at:

<http://www.photodex.com/>

It can be downloaded online or from the installation CD (if purchased).

After purchasing on-line, **Photodex** sends the purchaser an email with the full **Registration** details. This enables the purchaser to download the software again at any time. The software can also be downloaded to any computers the purchaser owns as long as it is not for commercial purposes.